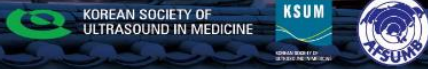


AFSUMB 2024

The 16th Congress of the Asian Federation of Societies for Ultrasound in Medicine and Biology
in conjunction with *KSUM 2024*

Shaping the Future with Ultrasound

May 9 (Thu) – 11 (Sat), 2024 | Coex, Seoul, Korea



Speaker: Jeongin Yoo

Affiliation: Department of Radiology, Seoul National University Hospital

Specialty: Abdominal imaging

[Educational Background]

2007 – 2013 College of Medicine (M.D.), Chung-Ang University
2014 – 2017 Graduate School (M.S.), Chung-Ang University
2021 – present Graduate School (Ph.D.), Seoul National University

[Professional Experience]

2013 – 2014 Rotating Internship at Chung-Ang University Hospital, Seoul
2014 – 2018 Radiology Residency at Chung-Ang University Hospital, Seoul
2018 – 2019 Radiology Fellowship at Seoul National University Hospital, Seoul
2019 – present Clinical Assistant Professor at Seoul National University Hospital

[Main Scientific Publication]

1. Yoo J, Cho H, Lee DH, Cho EJ, Joo I, Jeon SK. Prognostic role of computed tomography analysis using deep learning algorithm in patients with chronic hepatitis B viral infection. *Clin Mol Hepatol.* 2023;29(4):1029-42.
2. Yoo J, Yoon SH, Lee DH, Jang JY. Body composition analysis using convolutional neural network in predicting postoperative pancreatic fistula and survival after pancreatoduodenectomy for pancreatic cancer. *Eur J Radiol.* 2023 Dec;169:111182.
3. Yoo J, Lee JM, Joo I, Lee DH, Yoon JH, Yu MH, et al. Post-neoadjuvant treatment pancreatic cancer resectability and outcome prediction using CT, (18)F-FDG PET/MRI and CA 19-9. *Cancer Imaging.* 2023;23(1):49.
4. Yoo J, Lee JM, Kang HJ, Bae JS, Jeon SK, Yoon JH. Comparison Between Contrast-Enhanced Computed Tomography and Contrast-Enhanced Magnetic Resonance Imaging With Magnetic Resonance Cholangiopancreatography for Resectability Assessment in Extrahepatic Cholangiocarcinoma. *Korean J Radiol.* 2023;24(10):983-95.

AFSUMB 2024

The 16th Congress of the Asian Federation of
Societies for Ultrasound in Medicine and Biology
in conjunction with *KSUM 2024*

Shaping the Future with Ultrasound

May 9 (Thu) – 11 (Sat), 2024 | Coex, Seoul, Korea

KOREAN SOCIETY OF
ULTRASOUND IN MEDICINE

KSUM



5. Yoo J, Kim SH, Jeon SK, Bae JS, Han JK. Added value of [(68)Ga]Ga-DOTA-TOC PET/CT for characterizing pancreatic neuroendocrine neoplasms: a comparison with contrast-enhanced CT and/or MRI in a large study cohort. *Eur Radiol.* 2021;31(10):7734-7745.
6. Yoo J, Min JH, Lee DH, Hur BY, Kim SW, Kim E. Abbreviated Magnetic Resonance Imaging With Breath-Hold Three-Dimensional Magnetic Resonance Cholangiopancreatography: Assessment of Malignant Risk of Pancreatic Intraductal Papillary Mucinous Neoplasm. *J Magn Reson Imaging.* 2021;54(4):1177-1186.
7. Yoo J, Kim JH, Bae JS, Kang HJ. Prediction of prognosis and resectability using MR imaging, clinical, and histopathological findings in patients with perihilar cholangiocarcinoma. *Abdom Radiol (NY).* 2021;46(9):4159-4169.
8. Yoo J, Lee JM, Yoon JH, Joo I, Lee ES, Jeon SK, et al. Comparison of low kVp CT and dual-energy CT for the evaluation of hypervascular hepatocellular carcinoma. *Abdom Radiol (NY).* 2021;46(7):3217-3226.
9. Yoo J, Lee JM, Yoon JH, Joo I, Lee DH. Additional Value of Integrated (18)F-FDG PET/MRI for Evaluating Biliary Tract Cancer: Comparison with Contrast-Enhanced CT. *Korean J Radiol.* 2021;22(5):714-724.
10. Yoo J, Kim SW, Lee DH, Bae JS, Cho EJ. Prognostic role of spleen volume measurement using computed tomography in patients with compensated chronic liver disease from hepatitis B viral infection. *Eur Radiol.* 2021;31(3):1432-42.